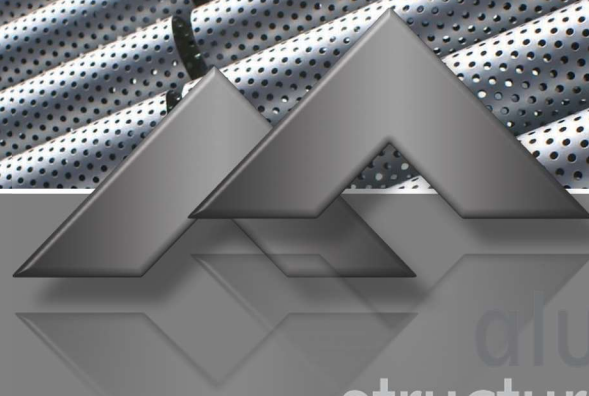
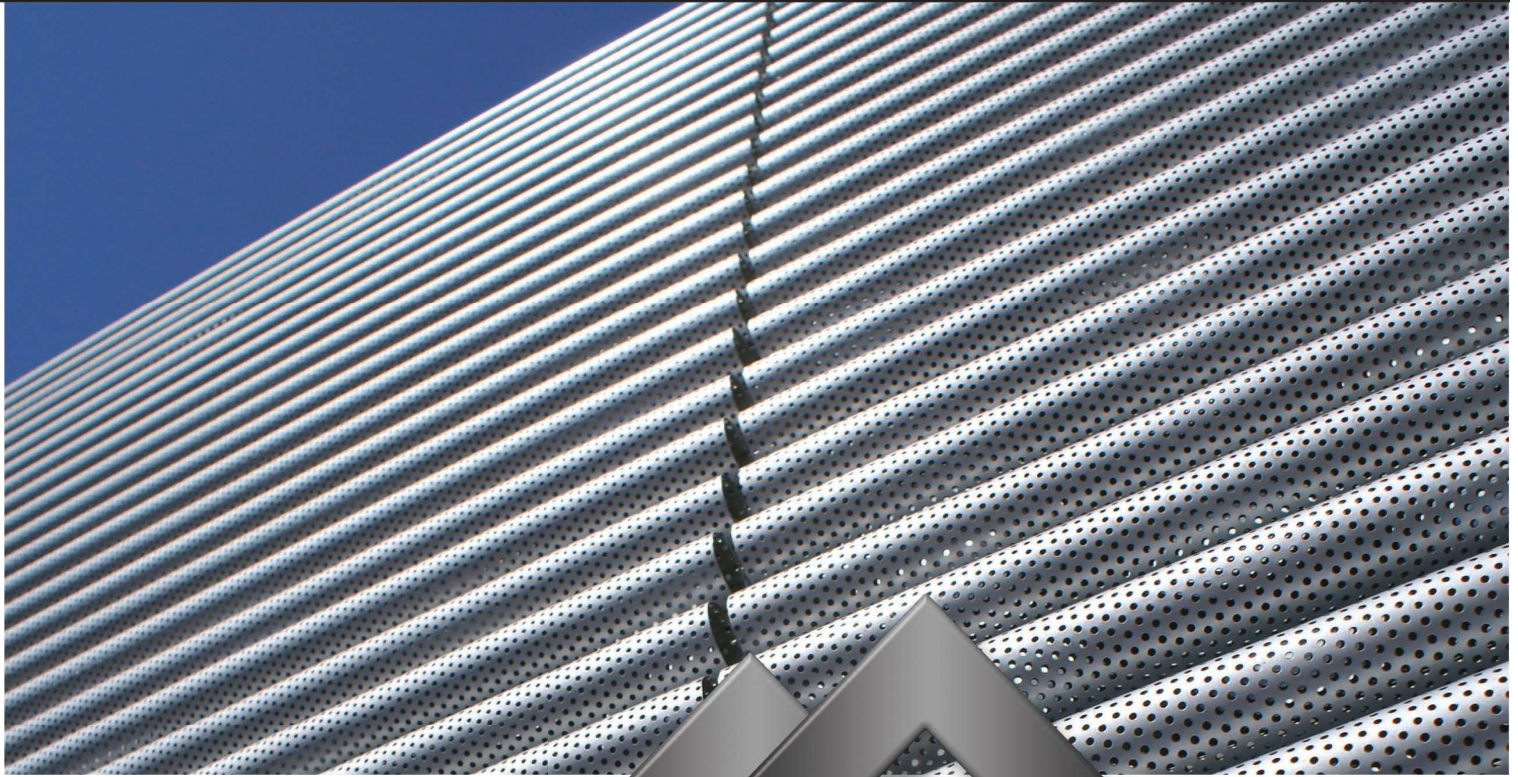


TUBRISE

SUNLOUVRE



africa aluminium structural systems

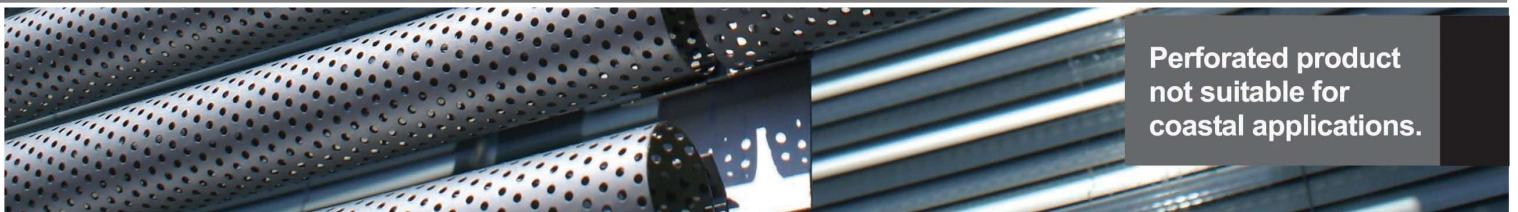
Namibian Appointed Distributor – Authorised installer

Tel +264 61 218611 | Fax + 264 61 215560

www.africaaluminium.com

12 Ruhr Street – Northern Industrial Area

Windhoek Namibia



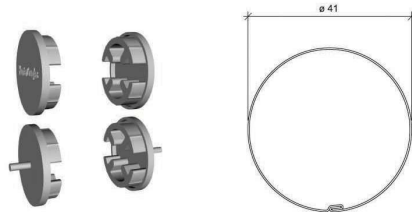
**Perforated product
not suitable for
coastal applications.**



www.hunterdouglas.co.za

HunterDouglas®

SOLAR CONTROL



TECHNICAL DESCRIPTION

Product	Material	Thickness (mm)	Weight (kg/ml)	Length max. (mts)
Tubrise	Aluminium	0,5	0,32	6

Colours: Standard colour is Natural Anodised.
Special colours upon request.

Finish: Perforated or solid

Uses: Sunlouvres and sunshields

Modules: Spacing of tubes is variable

CHARACTERISTICS

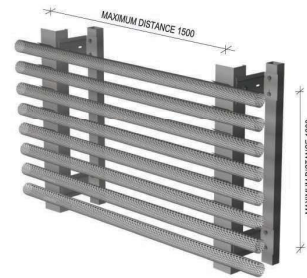
- **Tubrise** Sunlouvre made of aluminium tubular panels with variable spacing according to project requirements.
- It is a special architectural element for both sun control and aesthetic in building façades and other related applications.
- The **Tubrise** sunlouvre can be fitted in either horizontal or vertical application.
- **Tubrise** allows for a quick and easy installation.
- The **Tubrise** Sunlouvre can be requested with plain or drilled #103 or micro drilled finish.
- It permits the option of placing covers at the ends of the tubular panels.

ASSEMBLY

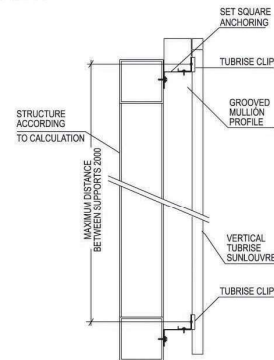
The **Tubrise** sunlouvre is installed to a substructure with a variable spacing, according to the project requirements. The panel is supported by clips which are in turn fixed mechanically to the support structure.

Note: Components of the product of this brochure are in permanent development and innovation. Could be subjected to modifications. Measures are in millimeters (mm.).

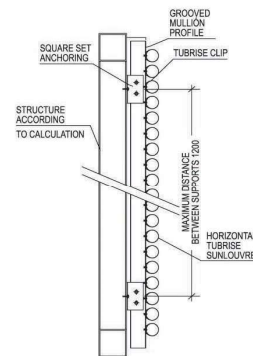
INSTALLATION



VERTICAL TUBRISE



HORIZONTAL TUBRISE



CORNER TUBRISE

